

How Do Humans Work?

As Scientists we will:

- Look at the digestive system.
- Investigate how our eyes work.
- Understand how our teeth function.
- Look at living a healthy lifestyle



As Art and Designers we will:

- Learning about Andy Warhol and the Pop art movement

As Religious Explorers we will:

- Explore the idea of being a Christian in Britain today.

As Historians and Geographers we will:

- Sequence events
- Gather information from sources
- Learn what a volcano island is and where they are in the world
- Find out what causes an earthquake and how earthquakes can be measured

As Writers we will:

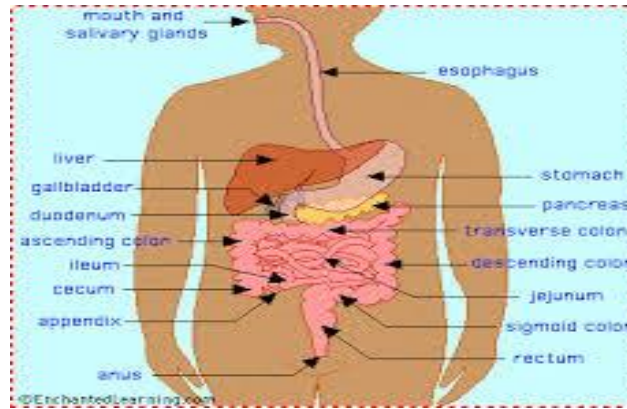
Poetry
Narrative descriptions
Non-Chronological reports



As Readers we will be reading *Greta and the Giants* and *Pebble in my Pocket*.

As Mathematicians we will be:

- Working with 100s, 10s and 1s
- Finding 1, 10 or 100 more or less
- Comparing and ordering objects and numbers to 1000
- Adding/subtracting 1 and 2/3-digit and 2 and 3-digit numbers
- Representing numbers to 100, and then 1000



Science Museum Day – September 15th
As the entry point to our unit, we are going to the Science Museum to learn all about the digestive system.

Exit Point:

As hired 'curators' students will promote healthy living by putting on an exhibition.

What can you do to help in Year 3?

- Read regularly
- Complete homework and spellings.
- Practice times tables daily.

As French speakers we will:

- Learn different phonics for vowel sounds



As Mindful Thinkers we will:

- Set personal goals
- Learn how to face challenges positively
- Understand why rules are needed.
- Make responsible choices and take action
- Understand how actions affect others.

As Sports Stars we will be learning:

- Fundamental movement skills
- Use multi-skilled activities (football, netball)



PE is on Wednesdays and Fridays. Students will come to school in PE kits.

If you have any questions or would like some more information about our topic, please speak to us or contact us via Class Dojo.



Miss Blair and Miss Todd

Enrichment Activities:

- Halloween Disco
- Self-Esteem Machine Workshop
- Science Museum

Adaptable

Communicator

Ethical

Thinker

Empathetic

Respectful

Resilient

Collaborator